

## DETAILS OF ENTRY

### OFFICIAL OPENING AND PRIZES: JULY 19TH

**PRIZES:** JCP Studios, Cutler and Co, Centre for Contemporary Photography and more to be announced.

**LOCATION:** Seventh Gallery, 155 Gertrude St, Melbourne VIC 3065

**HOW TO ENTER:** Enter online via [www.gspf.com.au](http://www.gspf.com.au), complete the form then email to [entries@gspf.com.au](mailto:entries@gspf.com.au) or POST entry including a CD to The Gertrude Association PO Box 1680 Collingwood VIC 3066.

**ENTRY DEADLINE:** Saturday the 6th of July at MIDDAY (or postmarked the Friday before)

**FORMAT:** Must be a single photographic image per entry, photo collage cannot be accepted. **Each entry must be submitted in tiff or jpeg file format and be no larger than 5MB if submitting via email.** Image must be high resolution of 300 dpi with dimensions of 420 x 297mm. All images will be printed on A3 sized paper on fine art photographic luster paper.

**ENTRY FEE:**

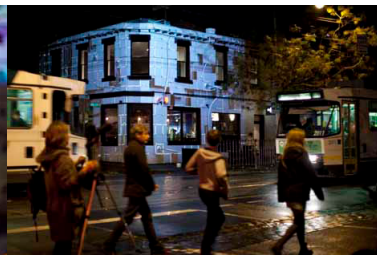
- 1 entry \$30
- 2 entries \$60
- 3 entries \$80

**COLLECTION:** Entries that do not sell will require collection on Sunday the 28th of July from 4pm - 8pm, otherwise the images will be destroyed due to storage limitations. Should your work be sold during the festival the curator will contact you to arrange payment directly with the buyer.

**CONDITIONS OF ENTRY:** All entries will be acknowledged via email. If entering multiple images via email please consider sending them in separate emails. You will be notified your application has been received within a couple of days – if you have not heard from us please make contact to confirm your entry has been received. Image must be captured on camera by the entrant and contain scenes from the Gertrude Street Projection Festival during the last 5 years. Other photos of projection work not relating to the Gertrude Street Projection Festival will not be accepted. Entry fees are non-refundable. All images will be unframed and pinned to the wall. Insurance is the sole responsibility of the entrant, the Gertrude Association or Seventh Gallery cannot accept liability if the image is lost, stolen or damaged.

The Gertrude Association reserves the right to make selections for hanging of the exhibition that may be determined by available space. In such an event, a full refund will be provided.

Prize-winners will be announced at the opening and posted on the Gertrude Street Projection Festival's Facebook 20th July 2013 and website soon after.



SUPPORTED BY

The  
Gertrude  
Association



GERTRUDE STREET  
PROJECTION FESTIVAL  
19-28 JULY 2013



**GERTRUDE STREET  
PROJECTION FESTIVAL  
19-28 JULY 2013**

## 2013 GERTRUDE STREET PROJECTION FESTIVAL PROJECT CAPTURE PHOTO COMPETITION

The Gertrude Street Projection Festival is in its 6th year, its time for us all to look back on the amazing achievements and connections that have been made. Lets reflect not only on the stellar projection artists and the strong community focus that the festival is famous for, but also the photographers that have been there to capture it.

Every year we see thousands of people flock to Gertrude Street for the festival with their cameras, tripods and phones. You have been capturing the festival for long as we have been projecting it: let's celebrate that.

This year we have collaborated with Seventh Gallery on Gertrude Street to exhibit site-specific projection installations and also run our first photography competition. If you captured it, we want to see it!

PROJECT CAPTURE photography competition exhibition runs for the length of the festival becoming a beacon of projected art even during the light of day. **Any photographer whether you consider yourself professional or amateur, can enter and all entries will be exhibited.** By paying the entry fee you not only support the festival running for future years, but you also get your work printed on fine art photographic paper and hung for you in Seventh Gallery.

This exhibition is being held as part of the 2013 Gertrude Street Projection Festival supported by The Gertrude Association.

PLEASE PRINT CLEARLY.

Name \_\_\_\_\_  
 Address \_\_\_\_\_  
 Suburb \_\_\_\_\_  
 State \_\_\_\_\_ Postcode \_\_\_\_\_  
 Phone \_\_\_\_\_ Mobile \_\_\_\_\_  
 Email \_\_\_\_\_

### PAYMENT DETAILS

Payment is accepted by EFT or direct deposit to: The Gertrude Association, Bendigo Bank BSB 633000 Account Number 148020191.

### INFORMATION FOR CATALOGUE

Title of work \_\_\_\_\_  
 Year taken \_\_\_\_\_ Edition (if applicable) \_\_\_\_\_  
 Price \_\_\_\_\_  
 Title of work \_\_\_\_\_  
 Year taken \_\_\_\_\_ Edition (if applicable) \_\_\_\_\_  
 Price \_\_\_\_\_  
 Title of work \_\_\_\_\_  
 Year taken \_\_\_\_\_ Edition (if applicable) \_\_\_\_\_  
 Price \_\_\_\_\_